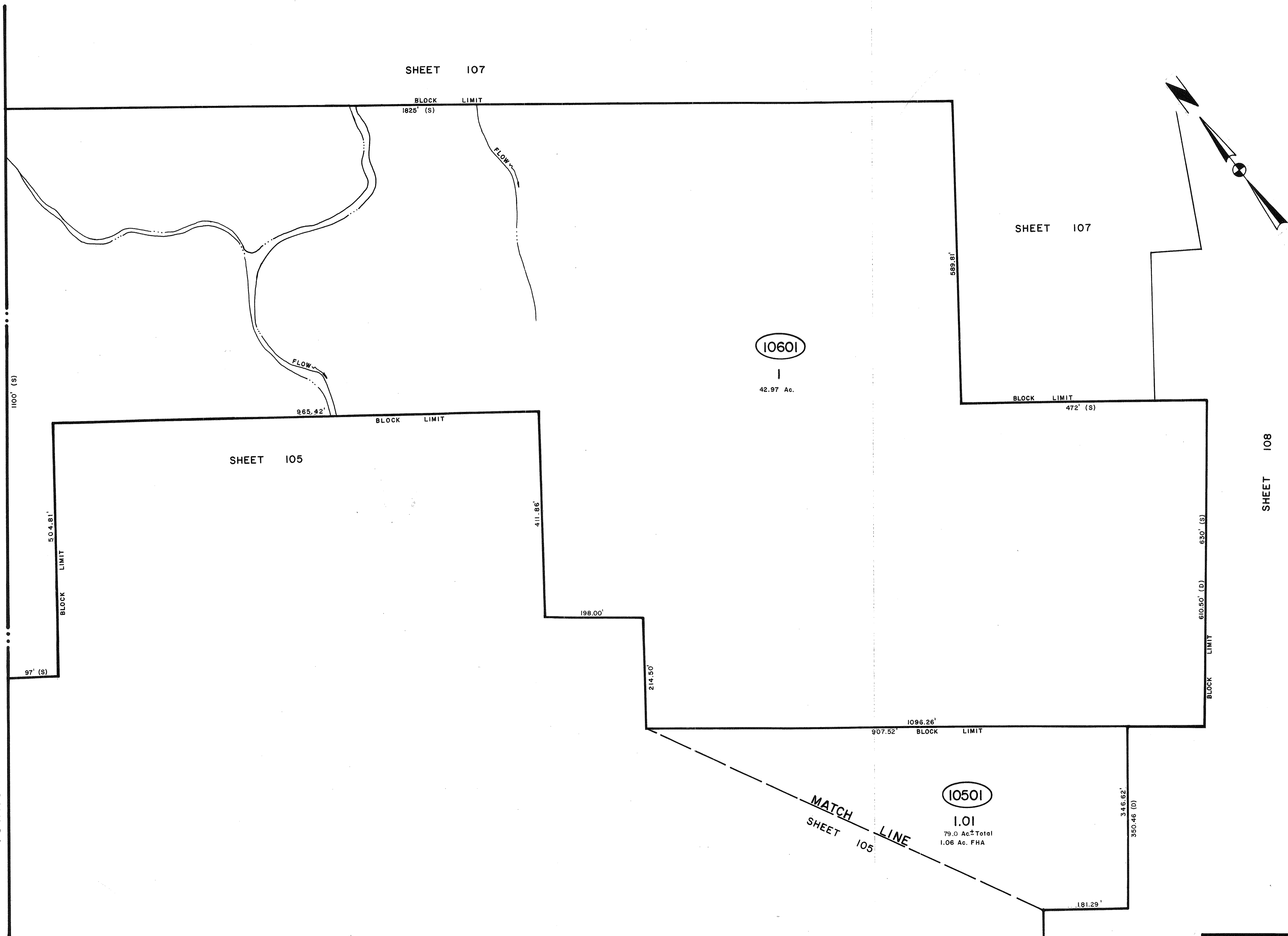


ROCKAWAY  
TOWNSHIP  
OF



10601

42.97 Ac.

10501

1.01  
79.0 Ac. Total  
1.06 Ac. FHA

MATCH LINE  
SHEET 105

**TAX MAP**  
**TOWNSHIP OF BOONTON**  
 MORRIS COUNTY, NEW JERSEY  
 SCALE: 1" = 100' JANUARY 1, 1990  
**LINCOLN H. EDWARDS**  
 P.E. / L.S. NEW JERSEY LICENSE No. 8892  
 COUVRETTE ASSOCIATES INC.  
 29 U.S. HIGHWAY 46 · ROCKAWAY, N.J. 07866

NEW JERSEY DEPARTMENT OF TREASURY  
 DIVISION OF TAXATION  
 LOCAL PROPERTY TAXES  
 PREPARED AS A TAX MAP PURSUANT TO THE  
 PROVISIONS OF CHAPTER 125, L.A.S. OF 1981, ETC.  
 FOR THE DIRECTOR, DIVISION OF TAXATION  
 BY *Lincoln H. Edwards* P.E. & L.S.  
 L.I.C. # 15434 CHIEF ENGINEERING SECTION  
 DATE AUG 23 1991 SERIAL NO. 725